

SECTION 1 **Installation of SUSE Linux Enterprise Server 10**

There are some changes in the installation process of SUSE Linux Enterprise Server 9 to SUSE Linux Enterprise Server 10.

In SUSE Linux Enterprise Server 9, the default authentication method was using an LDAP server. On SUSE Linux Enterprise Server 10, it is local authentication using the file `/etc/passwd`.

Another new feature is the Novell Customer Center.

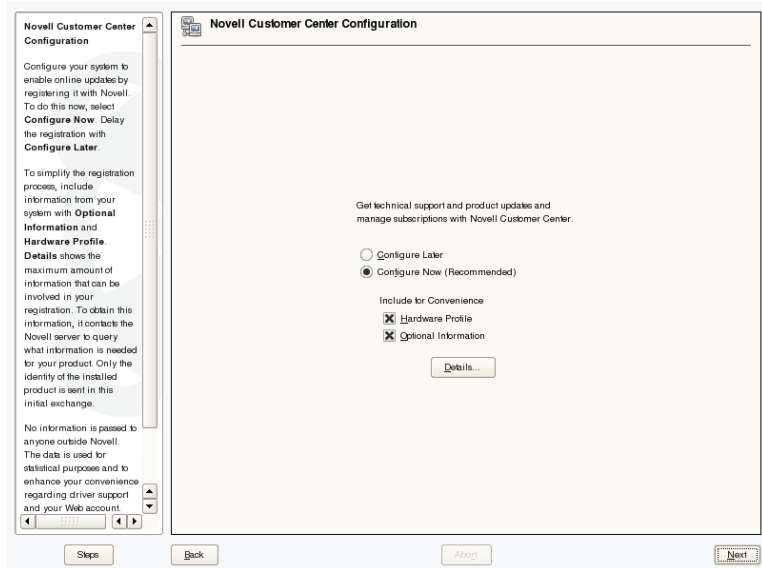
Objective

1. Understand the Novell Customer Center Configuration and Online Update

Objective 1 Understand the Novell Customer Center Configuration and Online Update

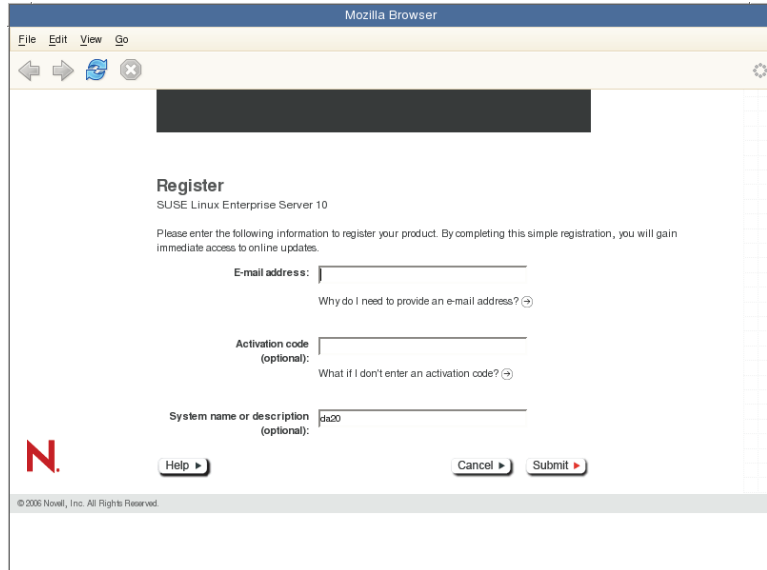
If the Internet connection test was successful, you can configure the Novell Customer Center, which is required to perform an online update. If there are any update packages available on the SUSE update servers, you can download and install them to fix known bugs or security issues.

Figure 1-1



Selecting **Next** starts a Browser and connects to the Novell web site, where all you have to enter is your e-mail address, and an activation code, if available.

Figure 1-2

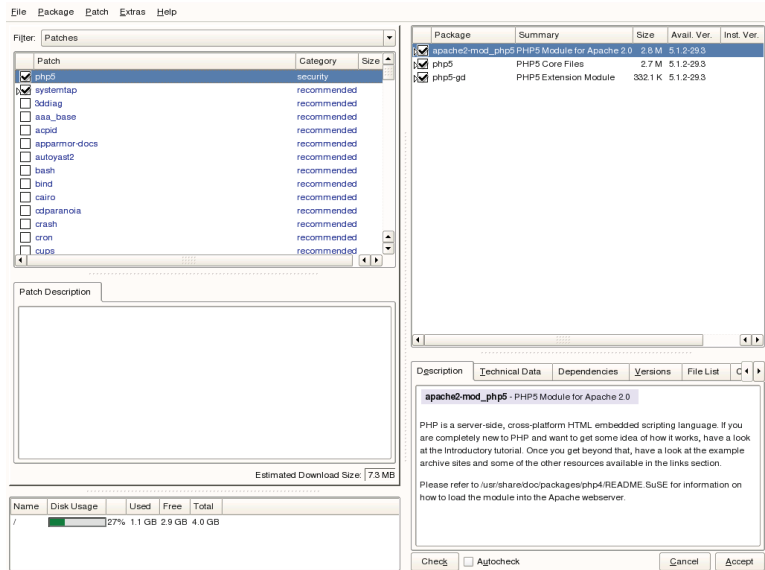


The screenshot shows a Mozilla Browser window displaying the registration page for SUSE Linux Enterprise Server 10. The page title is "Register" and the subtitle is "SUSE Linux Enterprise Server 10". The main text reads: "Please enter the following information to register your product. By completing this simple registration, you will gain immediate access to online updates." There are three input fields: "E-mail address:", "Activation code (optional):", and "System name or description (optional):". The "System name or description" field contains the text "ps20". Below the input fields are three buttons: "Help", "Cancel", and "Submit". The Novell logo is visible on the left side of the page. The footer of the page reads "© 2006 Novell, Inc. All Rights Reserved."

After successful registration, the Online Update dialog opens. You can start the Online Update by selecting **Run Update** and **Next**. (You can also select **Skip Update** to perform the update later in the installed system.)

YaST's online update dialog opens up with a list of available patches (if any).

Figure 1-3



Select the patches you want to install, and then start the update process by selecting **Accept**.

Once the installation is complete, visit the Novell Customer Center at <http://www.novell.com/center/> to administer your Novell products and subscriptions.



In the **Filter** pull-down menu of the software selection dialog there is an item **Patterns**. This filter displays all software that is available on the known installation media. It is grouped in predefined sets of packages that logically belong together. In SUSE Linux Enterprise Server 10 this item was labeled **Selections**.

Summary

Objective	Summary
1. Understand the Novell Customer Center Configuration and Online Update	On SUSE Linux Enterprise Server 10 it is local authentication using the file <code>/etc/passwd</code> . The Novell Customer Center is required to perform an online update.
